



 **RUSSELL[®]
ATHLETIC**

**STYLE
GUIDE**



Stitched FOR AUTHENTICITY™

*As inventors of the sweatshirt, Russell Athletic®
has committed to delivering high quality
apparel for over 120 years.*

During that time, our Eagle "R" logo has been an iconic part of our history.

It embodies the values that have made us one of America's most beloved brands, both on and off the field. Today is no different.

We remain committed to our original values of innovation and craftsmanship for everyone who lives and embraces the new athletic life.

PLAYING OUR PART IN A MORE *sustainable future.*



As a garment manufacturer, we understand the responsibilities we have to our people as well as the environment. Our mission is to empower those seeking responsibly made imprints and we hope that the more you learn about our Fruitful Futures™ plan, the more confidence you'll have in making Russell Athletic® your garment of choice for all your decorating needs.

Meaningful change requires action and collaboration, which is why we continue to partner and engage with key stakeholders such as our suppliers, customers, non-governmental organizations (NGOs), industry associations and consumers. Below are some of the member organizations with which we partner.





Fruitful Futures™

Sustainability Summary 2022

Creating a more fruitful future for our families, employees, stakeholders and customers has never been more critical.

This belief guides a steadfast commitment to run our business in ways that protect both the planet and the people around it — through the products we make and the lives we enrich. This work spans three pillars: People-Centric, Planet-Conscious and Product Authenticity.

This summary details aspects of our Fruitful Futures™ sustainability plan, a multi-year roadmap to deliver essential goods fit for our changing world.

Visit us at FOTLInc.com for the latest Fruitful Futures™ impact and news.

2022 Highlights



Our Initiatives

PEOPLE-CENTRIC

Diversity & Inclusion: Foster a workplace where everyone is treated with respect and empowered to contribute on an equal basis.

Fair Compensation: Analyze wages for workers around the world.

Respectful Workplaces: Committed to respectful workplaces and upholding human and labor rights.

Threads of Change: Lift up our communities through donations of product, time and money.

PLANET-CONSCIOUS

Greenhouse Gases: Reduce our greenhouse gas emissions in line with climate science.

Energy: Increase use of renewables across our supply chain.

Water: Reduce the amount of water we use per pound of production.

Waste: Eliminate waste in our own operations.

PRODUCT AUTHENTICITY

Product Safety: Certify all our fabrics to ensure chemical safety.

Transparency: Map all our supply chain back to raw materials.

Sustainable Sourcing: Source our raw materials sustainably.

DRI-

POWER® FLEECE

2 NEW COLORS

VINTAGE
BLUE

VINTAGE
WHITE

Our HERITAGE

was built on producing top quality fleece. Since 1926, we've prided ourselves on producing styles with superior construction that delivers on comfort and durability.

Our Dri-Power® Collection is no exception.

Made of three-end fleece that combines softness and durability, and moisture-wicking technology that maintains dryness and freshness for long-lasting comfort. Serious comfort is what sets Russell Athletic® styles apart from basic fleece.

698HBM1

DRI-POWER® UNISEX SWEATSHIRT



WEIGHT

9.3oz | 315g

MATERIAL

50% Cotton / 50% Polyester
Pre-Shrunk Fleece

FEATURES

- Dri-Power® moisture-wicking
- Three-end fleece for loft and durability
- Made with sustainably sourced, USA-grown cotton
- V-Patch detail at front neck
- Medium grey heather shoulder-to-shoulder tape
- Rib knit collar, cuffs, and waistband
- Side panel inserts
- Eagle “R” logo flagtag at waistband
- Imported
- 14 colors

Adult Sizing:

S-4XL*

Fabric Variation:

Oxford – 48% Cotton / 52% Polyester

COLORWAYS

*Available in 4XL



Ash



Black*



Black Heather*



Collegiate Blue



Dark Green



Maroon



Navy*



Oxford*



Purple



Royal



True Red



Vintage Blue* *New*



Vintage White *New*



White



★ ORIGINAL AMERICAN SPORTSWEAR SINCE 1902™



A man with short dark hair is standing on a reddish-brown track. He is wearing a blue hooded tracksuit and white sneakers with tan soles. He has a black fanny pack slung over his shoulder. The background is a textured, light-colored wall. Large white text is overlaid on the image.

REFINED
COMFORT

FROM *casual* TO
workout WEAR

695HBM1

DRI-POWER® UNISEX HOODIE



WEIGHT

9.3oz | 315g

MATERIAL

50% Cotton / 50% Polyester
Pre-Shrunk Fleece

FEATURES

- Dri-Power® moisture-wicking
- Three-end fleece for loft and durability
- Made with sustainably sourced, USA-grown cotton
- V-Patch detail at front neck
- Medium grey heather shoulder-to-shoulder tape
- 2-ply hood with grommets and drawcord
- Rib knit cuffs and waistband
- Side panel inserts
- Front pouch pocket
- Eagle “R” logo flag tag at waistband
- Imported
- 19 colors

Adult Sizing:

S-4XL*

Fabric Variation:

Oxford – 48% Cotton / 52% Polyester

COLORWAYS

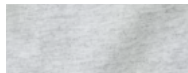
*Available in 4XL



Almond



Arctic Blue



Ash



Black*



Black Heather*



Blush Pink



Burnt Orange



Collegiate Blue



Dark Green



Green Moss



Maroon



Navy*



Oxford*



Purple



Royal



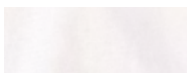
True Red



Vintage Blue* **New**



Vintage White **New**



White



697HBM1

DRI-POWER® UNISEX FULL-ZIP HOODIE



WEIGHT

9.3oz | 315g

MATERIAL

50% Cotton / 50% Polyester
Pre-Shrunk Fleece

FEATURES

- Dri-Power® moisture-wicking
- Three-end fleece for loft and durability
- Made with sustainably sourced, USA-grown cotton
- 2-ply hood with grommets and drawcord
- Medium grey heather shoulder-to-shoulder tape
- Center front zipper
- Rib knit cuffs and waistband
- Front pouch pocket
- Eagle “R” logo flagtag at waistband
- Imported
- 3 colors

Adult Sizing:

S-3XL

Fabric Variation:

Oxford – 48% Cotton / 52% Polyester

COLORWAYS



Black



Navy



Oxford



1Z4HBM0

DRI-POWER® UNISEX QUARTER-ZIP



WEIGHT

9.3oz | 315g

MATERIAL

50% Cotton / 50% Polyester
Pre-Shrunk Fleece

FEATURES

- Dri-Power® moisture-wicking
- Three-end fleece for loft and durability
- Made with sustainably sourced, USA-grown cotton
- Medium grey heather shoulder-to-shoulder tape
- Center front zipper with jersey zipper garage
- Side panel inserts with welt pockets
- Rib knit cuffs and waistband
- Eagle “R” logo flagtag at waistband
- Imported
- 4 colors

Adult Sizing:

S-3XL

Fabric Variation:

Oxford – 48% Cotton / 52% Polyester

COLORWAYS



Black



Black Heather



Navy



Oxford



MADE WITH

SUSTAIN-ABLY SOURCED

USA GROWN
COTTON



20JHBM0

DRI-POWER® POCKETED JOGGER

WEIGHT

9.3oz | 315g

MATERIAL

50% Cotton / 50% Polyester Pre-Shrunk Fleece

FEATURES

- Dri-Power® moisture-wicking
- Three-end fleece for loft and durability
- Made with sustainably sourced, USA-grown cotton
- Side-entry pockets
- Elastic waistband with internal drawcord
- Graded inseams
- Rib knit cuffs
- Eagle “R” logo flagtag along pocket
- Imported
- 4 colors

Adult:

S-4XL

Fabric Variation:

Oxford – 48% Cotton / 52% Polyester

**COLORWAYS**

Black



Black Heather



Navy



Oxford



029HBM0

DRI-POWER® POCKETED CLOSED-BOTTOM SWEATPANT



WEIGHT

9.3oz | 315g

MATERIAL

50% Cotton / 50% Polyester
Pre-Shrunk Fleece

FEATURES

- Dri-Power® moisture-wicking
- Three-end fleece for loft and durability
- Made with sustainably sourced, USA-grown cotton
- Side-entry pockets
- Elastic waistband with internal drawcord
- Elastic-bottom leg opening
- Graded inseams
- Eagle “R” logo flagtag along pocket
- Imported
- 4 colors

Adult Sizing:

S-4XL*

Fabric Variation:

Oxford – 48% Cotton / 52% Polyester

COLORWAYS

*Available in 4XL



Black*



Black Heather



Navy



Oxford*





696HBM0

DRI-POWER® SWEATPANT



WEIGHT

9.3oz | 315g

MATERIAL

50% Cotton / 50% Polyester
Pre-Shrunk Fleece

FEATURES

- Dri-Power® moisture-wicking
- Three-end fleece for loft and durability
- Made with sustainably sourced, USA-grown cotton
- Elastic-bottom leg opening
- Elastic waistband with internal drawcord
- Graded inseams
- Imported
- 4 colors

Adult Sizing:

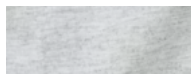
S-4XL*

Fabric Variation:

Oxford – 48% Cotton / 52% Polyester

COLORWAYS

*Available in 4XL



Ash



Black



Navy



Oxford*



596HBM0

DRI-POWER® POCKETED OPEN-BOTTOM SWEATPANT



WEIGHT

9.3oz | 315g

MATERIAL

50% Cotton / 50% Polyester
Pre-Shrunk Fleece

FEATURES

- Dri-Power® moisture-wicking
- Three-end fleece for loft and durability
- Made with sustainably sourced, USA-grown cotton
- Side-entry pockets
- Elastic waistband with internal drawcord
- Graded inseams
- Eagle “R” logo flagtag along pocket
- Imported
- 4 colors

Adult Sizing:

S-3XL

Fabric Variation:

Oxford – 48% Cotton / 52% Polyester

COLORWAYS



Black



Black Heather



Navy



Oxford



995HBB1

DRI-POWER® YOUTH HOODIE



WEIGHT

9.3oz | 315g

MATERIAL

50% Cotton / 50% Polyester
Pre-Shrunk Fleece

FEATURES

- Dri-Power® moisture-wicking
- Three-end fleece for loft and durability
- Made with sustainably sourced, USA-grown cotton
- V-Patch detail at front neck
- Medium grey heather shoulder-to-shoulder tape
- 2-ply hood
- Rib knit cuffs and waistband
- Side panel inserts
- Front pouch pocket
- Eagle “R” logo flagtag at waistband
- CPSIA compliant: Russell Athletic® youth products and packaging comply with the tracking label requirements of the Consumer Product Safety Improvement Act
- Imported
- 6 colors

Youth Sizing:

S-XL

Fabric Variation:

Oxford – 48% Cotton / 52% Polyester

COLORWAYS



Black



Black Heather



Navy



Oxford



Royal



True Red

20JHBB0

DRI-POWER® YOUTH POCKETED JOGGER



WEIGHT

9.3oz | 315g

MATERIAL

50% Cotton 50% Polyester
Pre-Shrunk Fleece

FEATURES

- Dri-Power® moisture-wicking
- Three-end fleece for loft and durability
- Made with sustainably sourced, USA-grown cotton
- Side-entry pockets
- Elastic waistband
- Graded inseams
- Rib knit cuffs
- Eagle “R” logo flagtag along pocket
- CPSIA compliant: Russell Athletic® youth products and packaging comply with the tracking label requirements of the Consumer Product Safety Improvement Act
- Imported
- 3 colors

Youth Sizing:

S-XL

Fabric Variation:

Oxford – 48% Cotton / 52% Polyester

COLORWAYS



Black



Navy



Oxford



This **TRANS-**
SEASONAL *collection,*
offered in an array of colors, provides the comfort of
cotton combined with the benefits of performance.

With Dri-Power® moisture-wicking, odor protection and UPF 30+,
these tees were created for functionable comfort.

2 NEW COLORS

VINTAGE
BLUE

VINTAGE
WHITE

A photograph of two men standing on a set of stairs. The man on the left is wearing a dark purple t-shirt, a gold chain necklace, and light-colored cargo pants. The man on the right is wearing a light blue t-shirt and blue jeans. The background is a plain, light-colored wall. The text 'DRI-POWER JERSEY' is overlaid in large white letters, with a registered trademark symbol (®) next to 'POWER'.

**DRI —
POWER®
JERSEY**

A man with short brown hair is leaning against a light-colored, textured wall. He is wearing a blue short-sleeved t-shirt, blue athletic shorts with a small white logo on the left leg, white socks, and white high-top sneakers with red laces and a red stripe. The background is a plain, light-colored wall with a horizontal white bar running across it.

PREMIUM SOFTNESS

GREAT FOR
ALL-DAY WEAR

64STTMO

DRI-POWER® CVC PERFORMANCE UNISEX T-SHIRT



WEIGHT

4.75oz | 160g

MATERIAL

60% Cotton/40% Polyester
Pre-Shrunk Jersey

FEATURES

- Dri-Power® moisture-wicking
- Odor protection
- UPF 30+ protection
- Made with sustainably sourced, USA-grown cotton
- Oxford shoulder-to-shoulder tape
- Rib knit collar
- Label free
- Eagle “R” logo flagtag at left hem
- Imported
- 16 colors

Adult Sizing:

S-4XL*

Fabric Variation:

Oxford – 47% Cotton / 53% Polyester

COLORWAYS

*Available in 4XL

		
Black*	Black Heather*	Burnt Orange
		
Cardinal	Collegiate Blue	Dark Green
		
Maroon	Navy*	Oxford*
		
Purple	Royal	True Red
		
White*	Vintage Blue* New	Vintage Heather Navy*
		
Vintage White* New		



64LTTM0

DRI-POWER® CVC PERFORMANCE UNISEX LONG-SLEEVE T-SHIRT



WEIGHT

4.75 oz | 160g

MATERIAL

60% Cotton / 40% Polyester
Pre-Shrunk Jersey

FEATURES

- Dri-Power® moisture-wicking
- Odor protection
- UPF 30+ protection
- Made with sustainably sourced, USA-grown cotton
- Oxford shoulder-to-shoulder tape
- Rib knit collar and cuffs
- Label free
- Eagle “R” logo flagtag at left hem
- Imported
- 12 colors

Adult Sizing:

S-3XL

Fabric Variation:

Oxford – 47% Cotton / 53% Polyester

COLORWAYS





WICKS AWAY
MOISTURE

UPF 30+
PROTECTION

64MTTMO

DRI-POWER® CVC PERFORMANCE UNISEX MUSCLE



WEIGHT

4.75oz | 160g

MATERIAL

60% Cotton / 40% Polyester
Pre-Shrunk Jersey

FEATURES

- Dri-Power® moisture-wicking
- Odor protection
- UPF 30+ protection
- Made with sustainably sourced, USA-grown cotton
- Oxford shoulder-to-shoulder tape
- Rib knit collar
- Label free
- Eagle “R” logo flagtag at left hem
- Imported
- 7 colors

Adult Sizing:

S-4XL*

Fabric Variation:

Oxford – 47% Cotton / 53% Polyester

COLORWAYS

*Available in 4XL



Black*



Black Heather*



Navy



Oxford*



Royal



True Red



White*



25843M0

COTTON JERSEY POCKETED SHORT



WEIGHT

6.8oz | 230g

MATERIAL

100% Cotton
Pre-Shrunk Jersey

FEATURES

- Heavyweight cotton
- Made with sustainably sourced, USA-grown cotton
- Elastic waistband with internal drawcord
- Side entry pockets
- 9" Inseam
- Eagle "R" logo flagtag along pocket
- Imported
- 4 colors

Adult Sizing:

S-4XL

Fabric Variation:

Black Heather - 50% Cotton/ 50% Polyester
Oxford - 47% Cotton/ 53% Polyester

COLORWAYS



Black



Black Heather



Navy



Oxford





RUSSELLATHLETICBUSINESS.COM
UNITED STATES 877.879.8407 | CANADA 800.567.7662

@RUSSELLB2B   

©2023 RUSSELL BRANDS, LLC.